

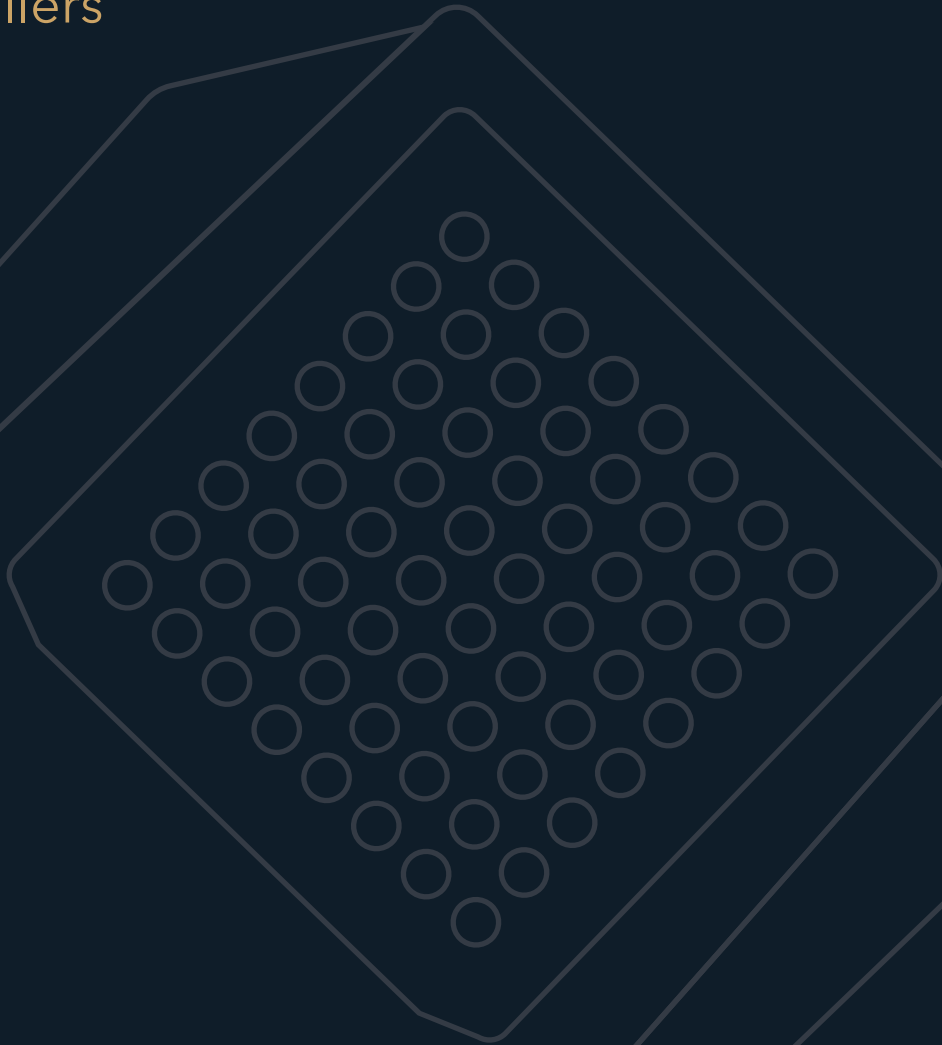
PREMIUM DRY VERGE SYSTEM

VERGE

MASTER



The dry fix verge solution
for professional installers



Key Features:



Flex and clip
installation



Accurate location
starter unit



All weather
installation



10 year performance
guarantee



Solid and
robust



Mechanically
fixed



Accommodates
gutter systems

The Verge Master system has been designed to offer a superior looking, solid, secure and professional dry fix verge solution.

The robust, well engineered system delivers a dependable quality installation every time.

The system is available in grey, brown and black and manufactured from UV stable high quality polypropylene. Handed units provide superior aesthetics with sleek, stylish lines that add value and kerb appeal.

Installation is quick and easy via the 'flex and clip' installation method and no special tools are required.

Verge Master has been independently tested by the BBA and conforms to BS 8612: Dry fixed ridge, hip and verge systems for slating and tiling, in addition to BS 5534 and NHBC Chapter 7.2 requirements.

Better by design

- ✓ Unique modern design
- ✓ Superior aesthetics
- ✓ Accurate location starter unit
- ✓ Accommodates gutter systems
- ✓ Mechanical fixing
- ✓ Ideal for new build and quality refurbishment
- ✓ Batten gauge range: 260 - 355mm
- ✓ Roof pitch range: 15 - 55°
- ✓ BBA tested to BS 5534 and BS 8612 requirements
- ✓ Manufactured under BS EN ISO 9001 Quality Management System and BS EN ISO 14001 Environmental Management System

Key Features:



Flex and clip installation



Accurate location starter unit



All weather installation



10 year performance guarantee



Solid and robust



Mechanically fixed



Accommodates gutter systems

Colours:

Available in grey, brown and black

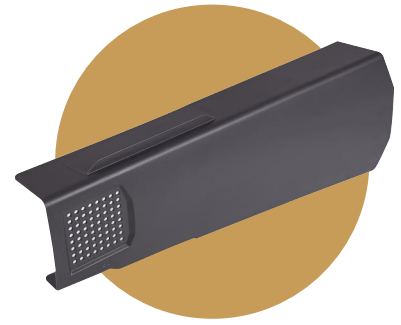


Viewed looking at the property from the kerb





Product Range:



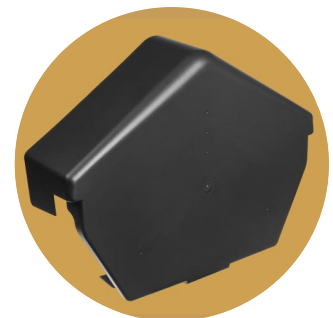
Left and right verge units



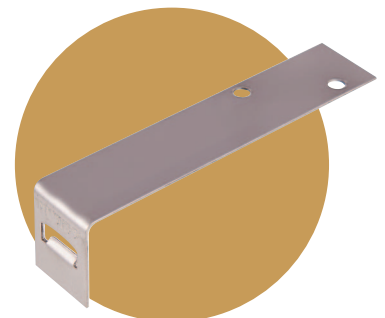
Left and right starter units



Round ridge cap



Angled Ridgecap



Batten end clip

Product Codes:

Item	Grey	Brown	Black
Verge unit left	DVLHGR50	DVLHBR50	DVLHBL50
Verge unit right	DVRHGR50	DVRHBR50	DVRHBL50
Starter unit left	DVLHSGR30	DVLHSBR30	DVLHSBL30
Starter unit right	DVRHSGR30	DVRHSBR30	DVRHSBL30
Angled ridge cap	DVRCAGR10	DVRCABR10	DVRCABL10
Round ridge cap	DVRCRGR10	DVRCRBR10	DVRCRBL10
Batten end clip	DVBEC50*	DVBEC50*	DVBEC50*

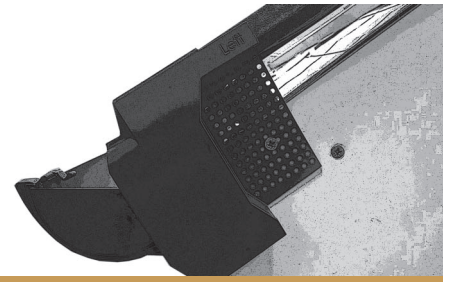
*Please note the batten end clip is stainless steel and not coloured

4 simple steps for a quick and easy installation:

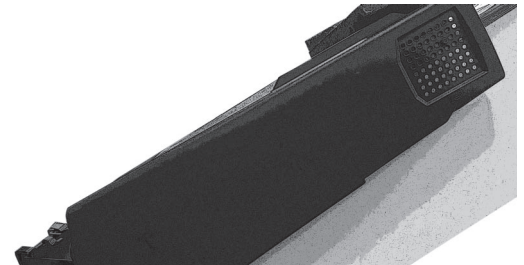
For new build - ensure tiling battens are extended 30mm beyond the gable wall or bargeboard. Fix a batten end clip to the end of every batten using a 40mm (min) x 3.25mm ring shank nail or equivalent screw.

For refurbishment - it is recommended that all existing mortar is removed. Run a suitable batten from eaves to ridge, below the undercloak on the gable wall or directly to the bargeboard.

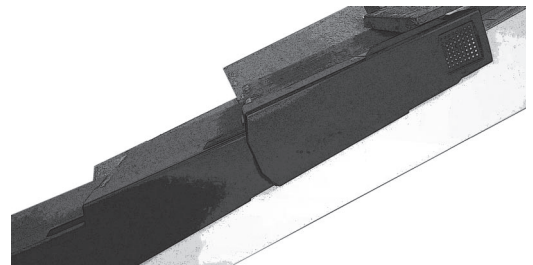
1. Fix the starter plate to the gable wall or bargeboard, ensuring the location guide is on top of the tile.
2. Fix the first Verge Master in place by clipping over the starter plate and ensuring the top of the verge unit is under the tile above. Fix into position through the batten end clip or running batten depending on your project.
3. For each successive Verge Master simply flex and clip over the verge below and slide up to the tile toe. Fix into position through the batten end clip or running batten depending on your project. Continue this process until you reach the ridge.
4. Flex and clip the ridge cap over the ends of both units, central to the ridge tile, and securely screw to the ridge batten.



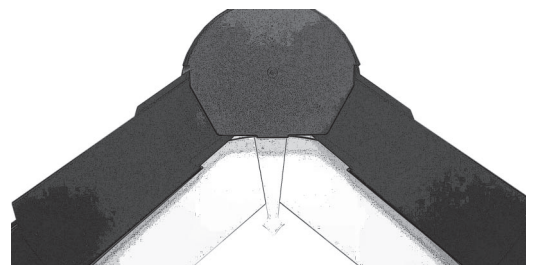
Step 1



Step 2



Step 3



Step 4

Contact Details

Dry Verge Systems

Billet Lane, Normanby Enterprise Park,
Normanby Road, Scunthorpe,
North Lincolnshire, DN15 9YH

hello@dryvergesystems.co.uk
www.dryvergesystems.co.uk

PREMIUM DRY VERGE SYSTEM
VERGE
MASTER

